



Comment accompagner le
secteur AV wallon dans
l'Odysée de l'éco-transition



Fonds économique wallon
de l'audiovisuel et du gaming



Financements de coproductions
6,5M/an - 638% de retombées
60% live - 40% PP/ Anim / VFX



Financements d'entreprises
13,59M encours
46 entreprises AV

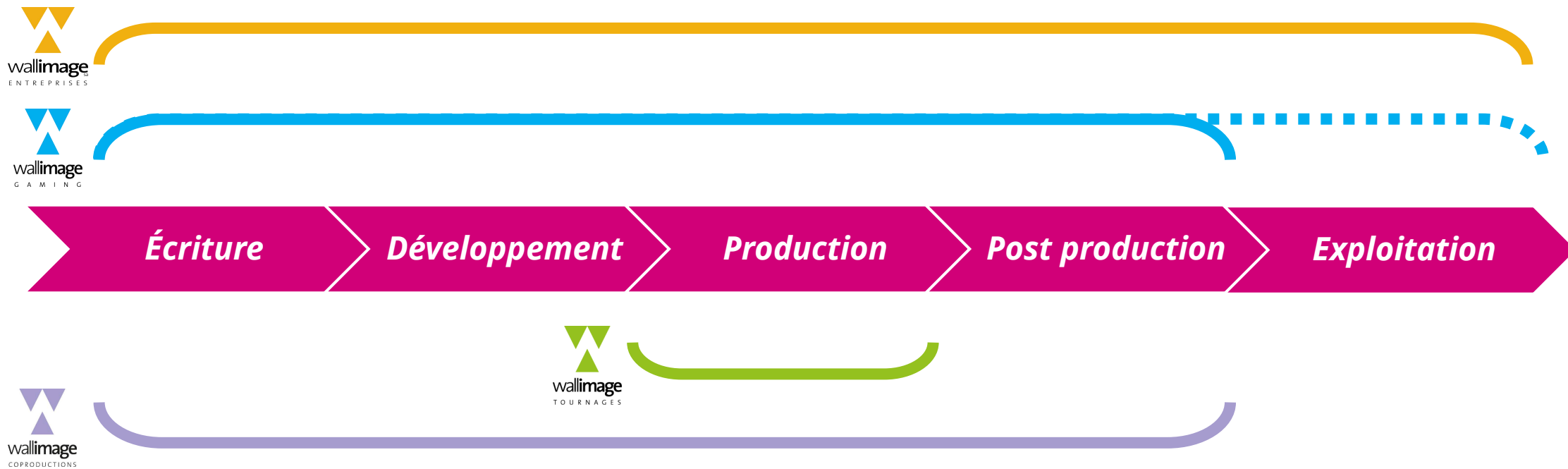


Accueil des tournages
743j de tournages
115 projets/an



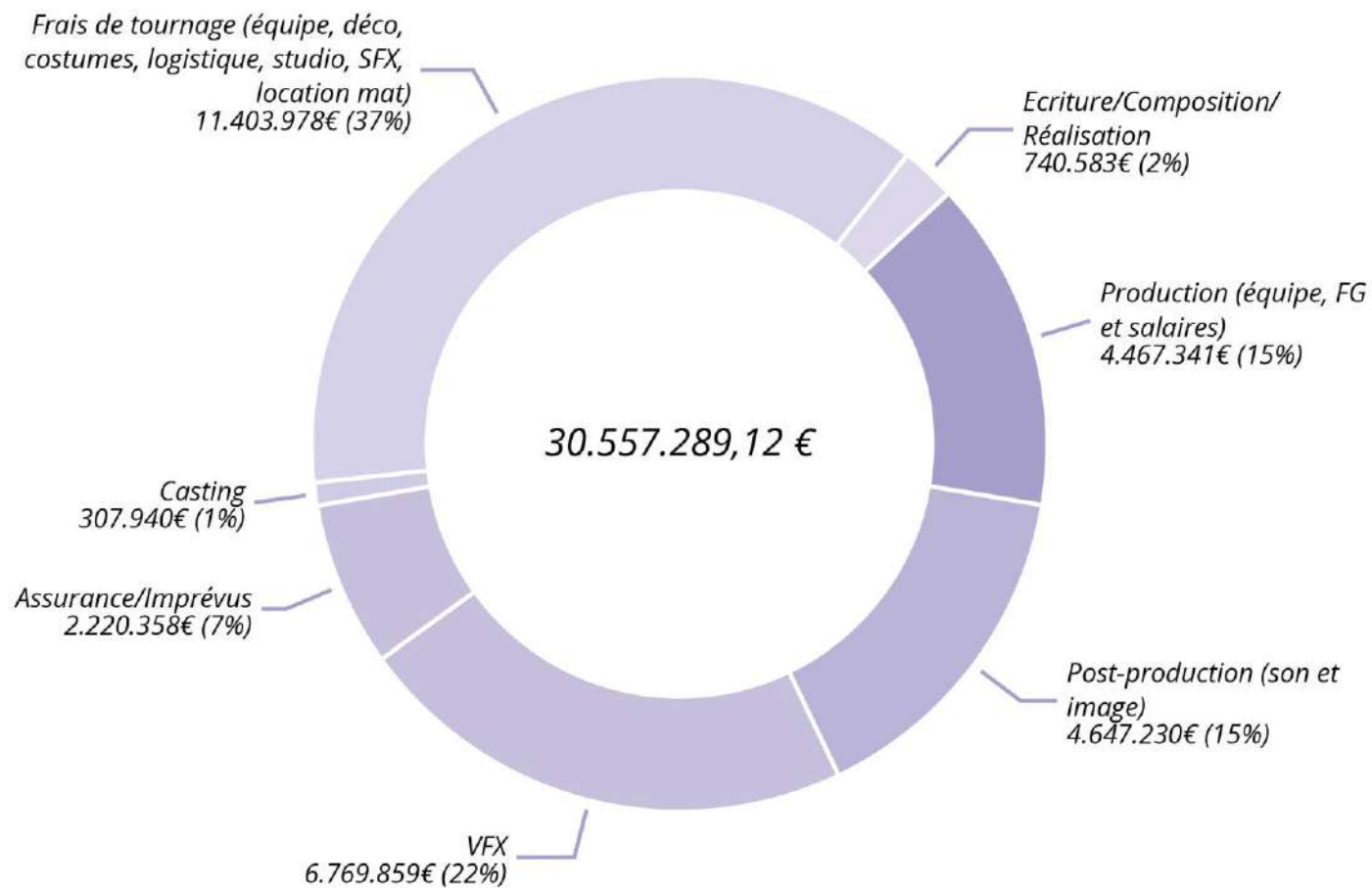
Financements de projets & ent.
4M/2ans
>500% de retombées

Processus de fabrication d'un film



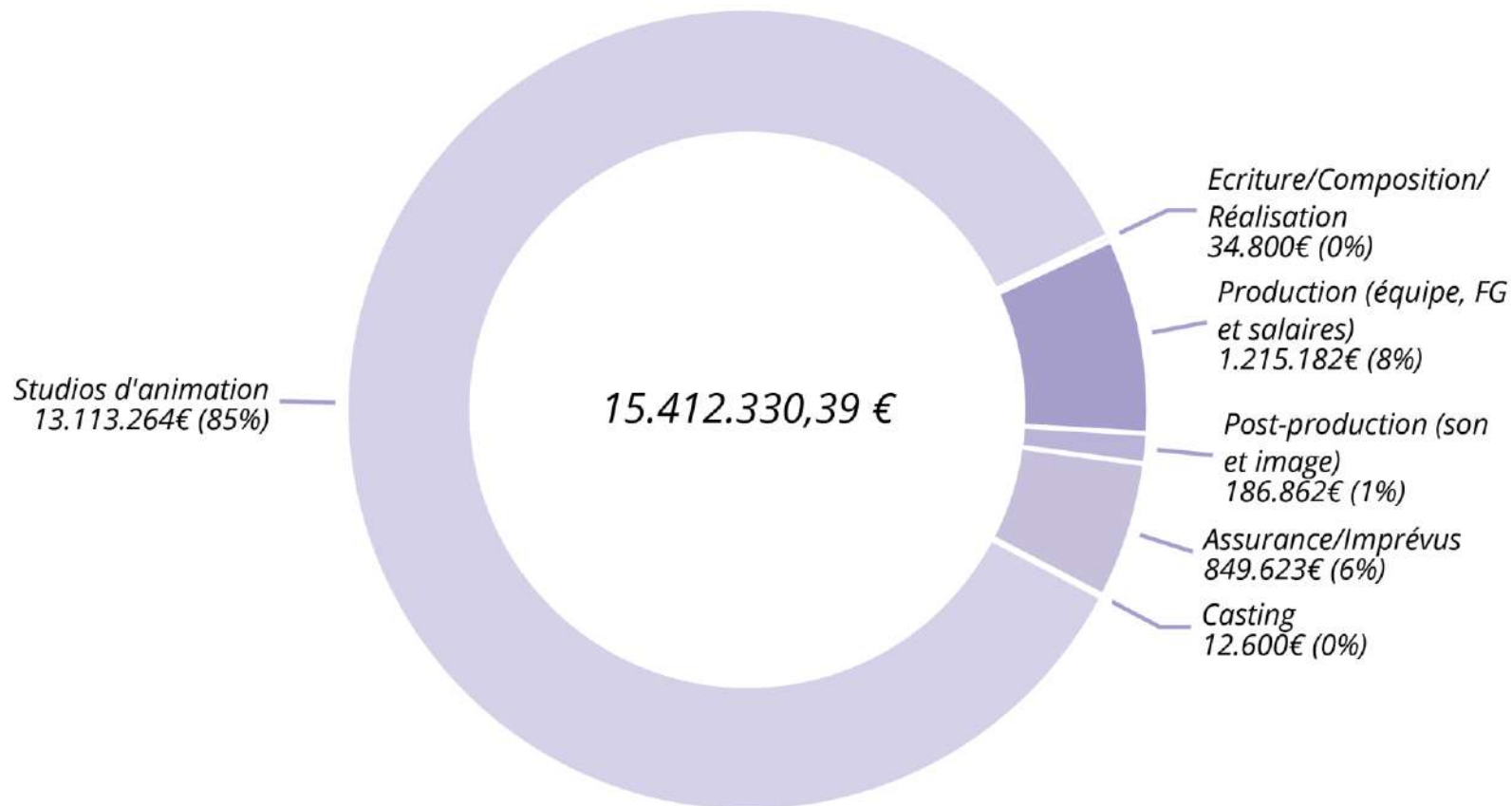


Impact régional





Impact régional





Les studios d'animation wallons

▶ 20STM STUDIO

ENGHIEN
Multidisciplinary Creative Studio: Animation 2D/3D,
compositing, storyboarding CGI, VFX, design, ...
<https://20stm.com>

▶ THE PACK WALLONIA

MONS
VR/AR, Gaming, Animation, Unity, ...
<https://thepack.studio>

▶ DREAMWALL

MARCINELLE
Animation 2D/3D séries, longs, docu, formats web+
Unreal: intégration & rendering, ...
<https://www.dreamwall.be>

▶ NEXTFRAMES ANIMATION

LA HULPE
Animation 2D/3D
<https://www.nextframes.com>

▶ AROMATES STUDIO

LIÈGE
Animation 2D/3D, compositing, ...

▶ BREAK THE GRID

LIÈGE
Animation, Design, ...
<https://www.breakthegrid.com>

▶ MOVIDA WALLONIE

LIÈGE
Animation 2D/3D, ...
<https://www.nwave.com>

▶ STIM LIÈGE

LIÈGE
Animation 3D, VFX, ...
<https://www.stimstudio.com>

▶ THE PICTURE FACTORY

LIÈGE
Animation 2D/3D, ...
<https://www.fabrique-d-images.com>

▶ WAOOH!

LIÈGE
Animation 2D/3D, storyboarding ...
<https://www.waoooh.be>

▶ MIKROS IMAGE BELGIUM

LIÈGE
Animation 2D/3D+VFX
<https://www.mpcvfx.com>



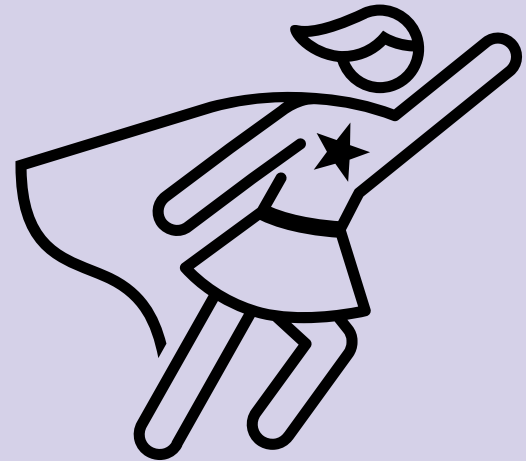
Impact de l'industrie française de l'animation, des VFX et de la post production

VFX	2,5 tCO ² e/ETP
Post production	1,6 tCO ² e/ETP
Animation	0,6 tCO ² e/ETP

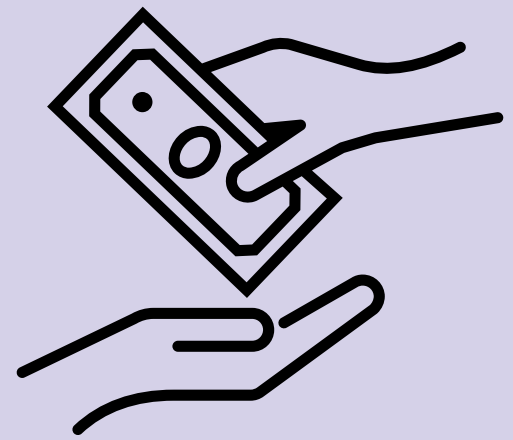
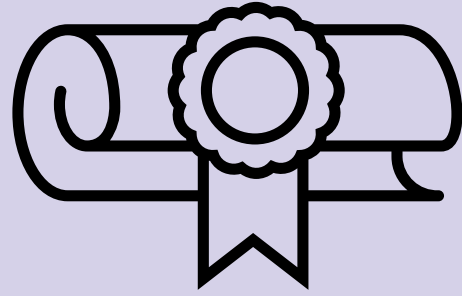


Éco conditionnalité des aides

Min 1 jour de tournage en BE

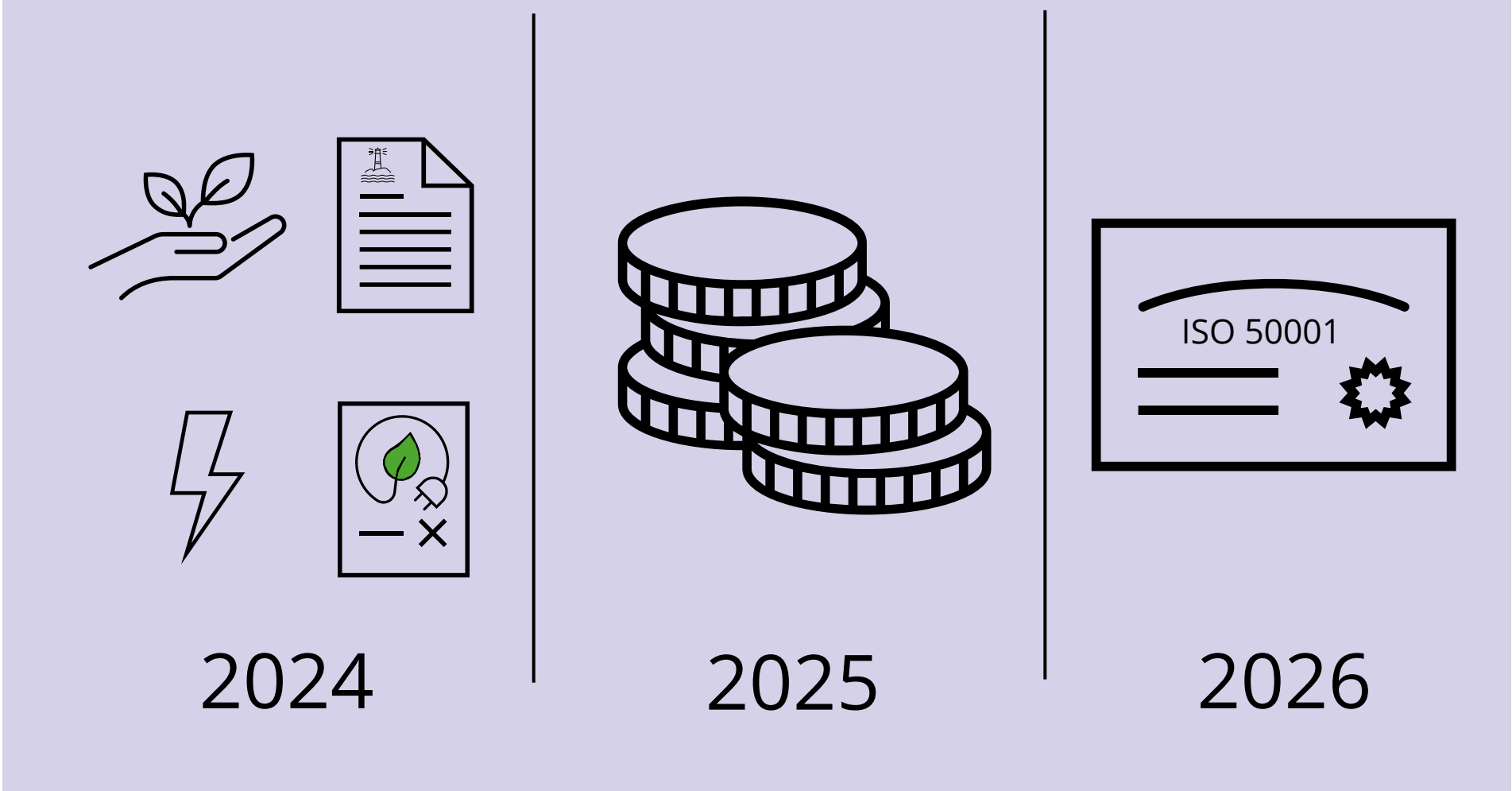


Obligatoire



Optionnel

Plan d'action d'éco transition



Quels outils utiliser?



Outil de mesure de l'empreinte des projets d'animation.

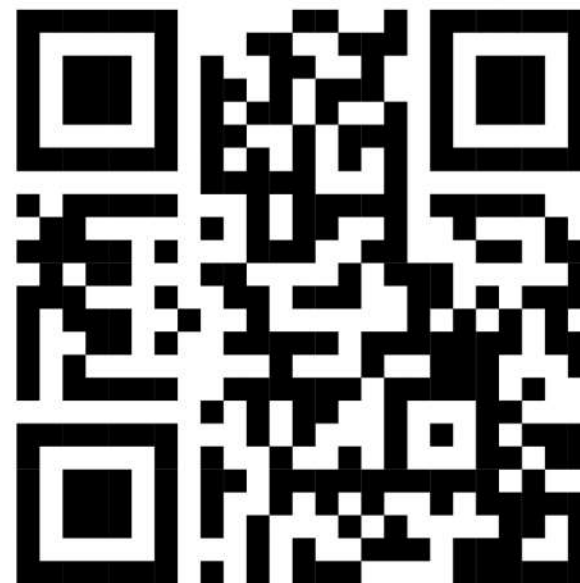


WE Wallonie
Entreprendre

Etude CNC :
Diagnostic environnemental des studios d'animation, de postproduction et de VFX | CNC

Merci !

TÉLÉCHARGEZ
LE BILAN
COMPLET



▶ [BIT.LY/WALLIBILAN](https://bit.ly/wallibilan)



ben@wallimage.be

065 404 038

The financing of Wallimage Entreprises benefits from the support of the Cultural and Creative Sectors Guarantee Facility with the financial backing of the European Union under the Creative Europe Programme.

Avec le soutien de
la



Wallonie

